



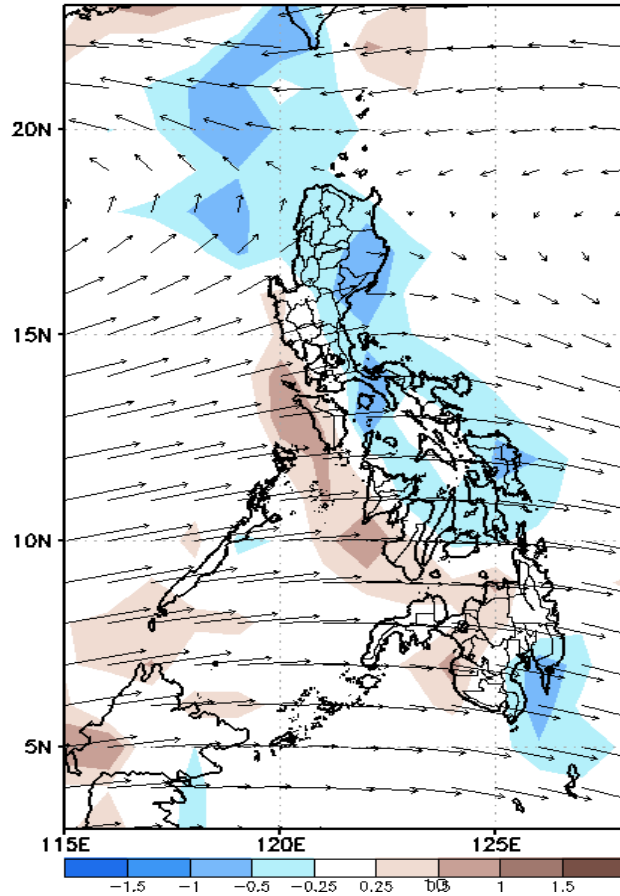
Week 1 & Week 2 Forecast for the Philippines using GEFS Model



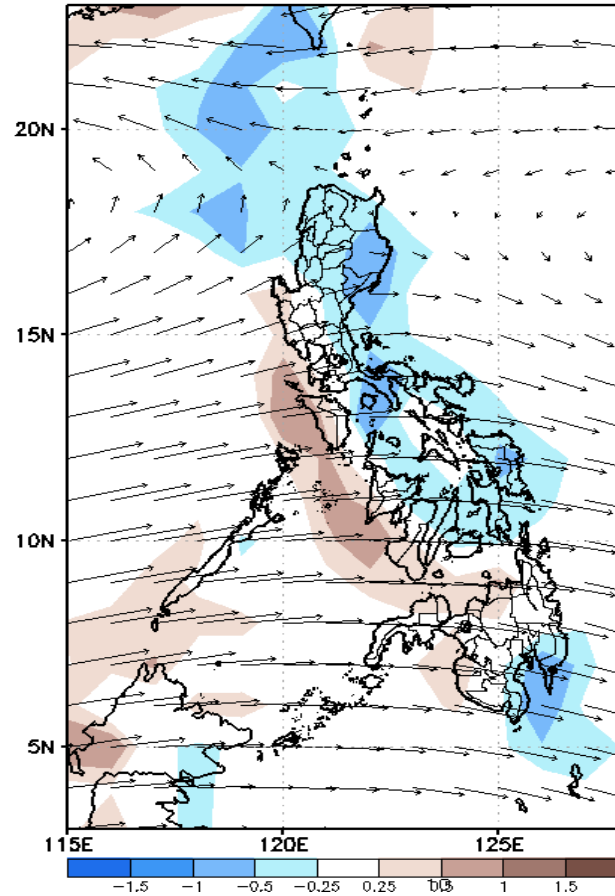
GEFS Week-1 Forecasts: Divergence & Wind Anomaly

Week 1: Oct 07-13, 2021

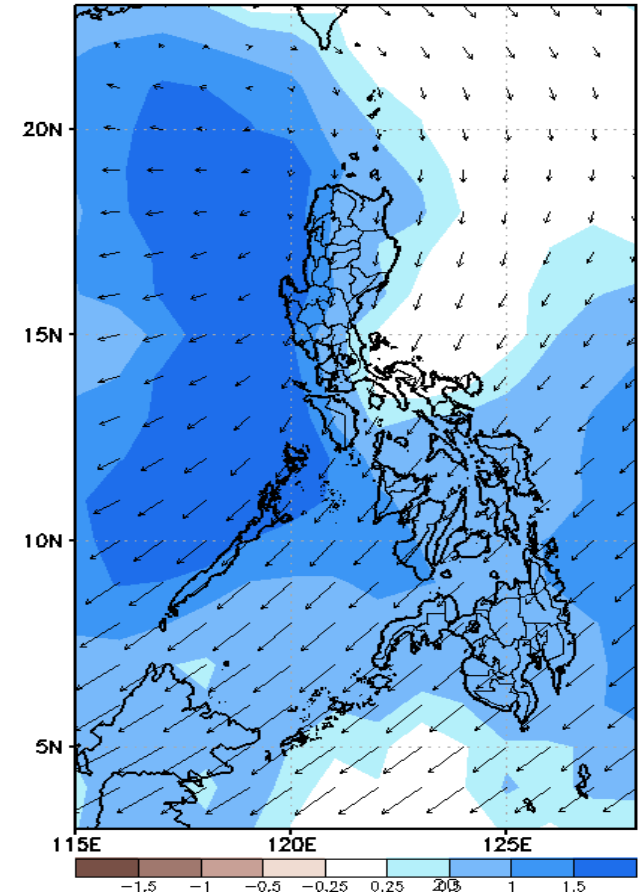
GEFS Week-1 850-hPa Divergence and Wind Anom
Valid: 20211007 - 20211013



GEFS Week-1 700-hPa Divergence and Wind Anom
Valid: 20211007 - 20211013



GEFS Week-1 200-hPa Divergence and Wind Anomaly
Valid: 20211007 - 20211013

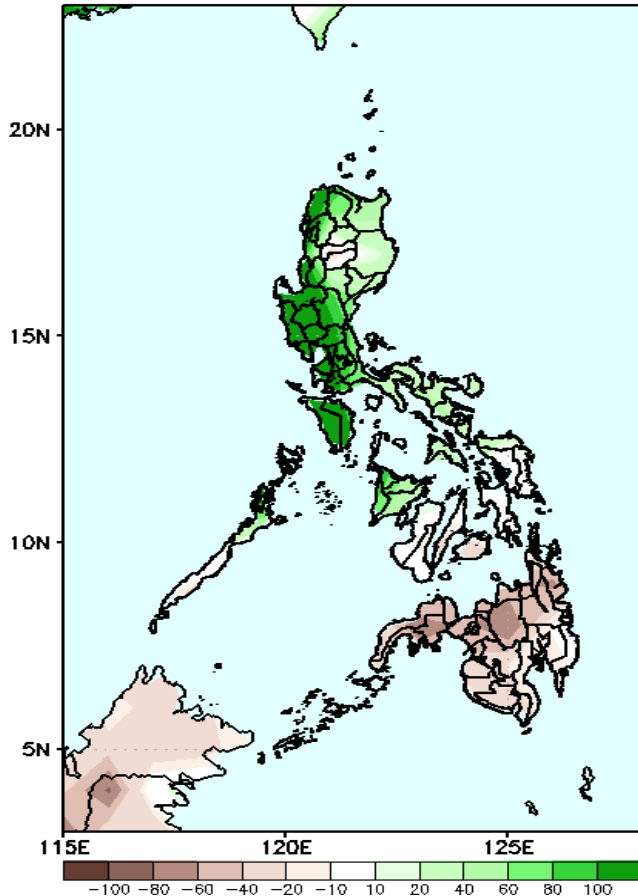


Upper and low level Divergence suggest likelihood of moderate to heavy precipitation in most parts of the country especially in Northern Luzon and Visayas. Southwest Monsoon affecting western sections of Luzon and Visayas, Easterlies affecting the rest of the country attributing to light to moderate rains due to thunderstorms during the forecast period.

Precipitation Anomaly and Exceedance Probability > 25/50 mm

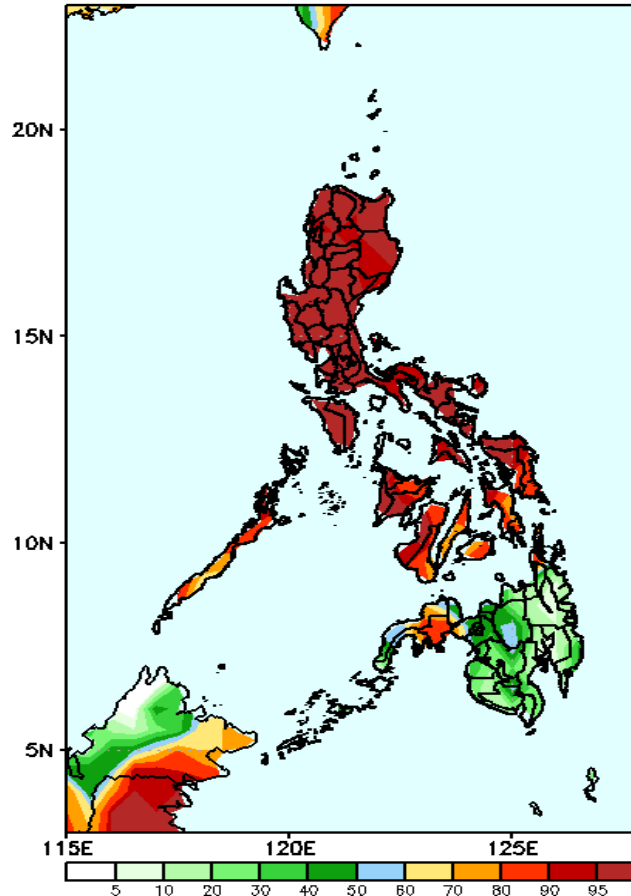
Week 1: Oct 07-13, 2021

GEFS Week-1 Precip Anomaly
Valid: 20211007 - 20211013



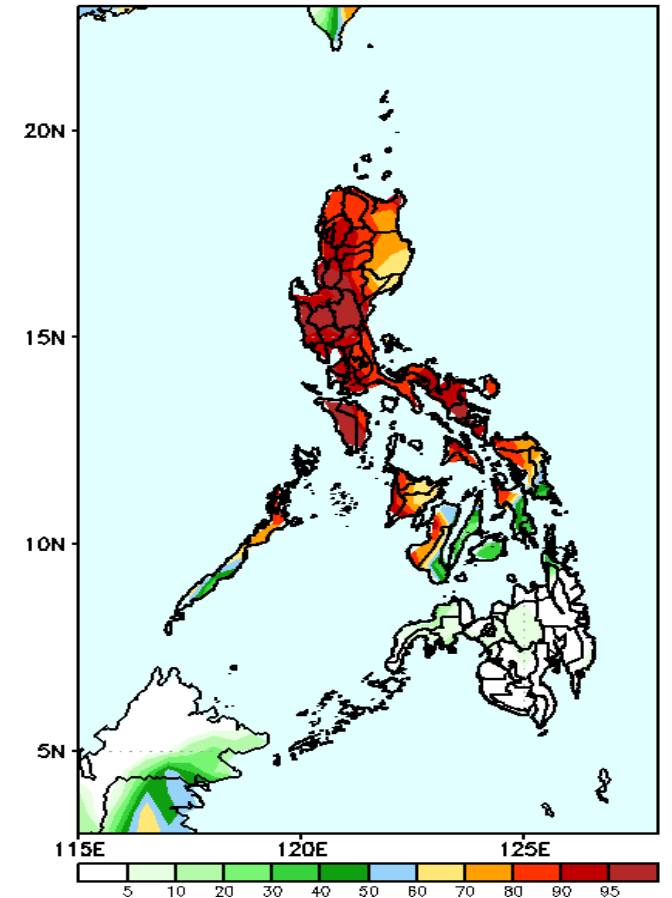
Increase of rainfall 40-150mm is expected in most parts of Luzon and Panay Island while 40-80mm rainfall deficit in Mindanao during the forecast period.

GEFS Week-1 Exceedance Prob. > 25mm
Valid: 20211007 - 20211013



High probability of rainfall to exceed 25mm in most parts of Luzon, Visayas and Zamboanga peninsula while less likely for the rest of Mindanao during the forecast period.

GEFS Week-1 Exceedance Prob. > 50mm
Valid: 20211007 - 20211013

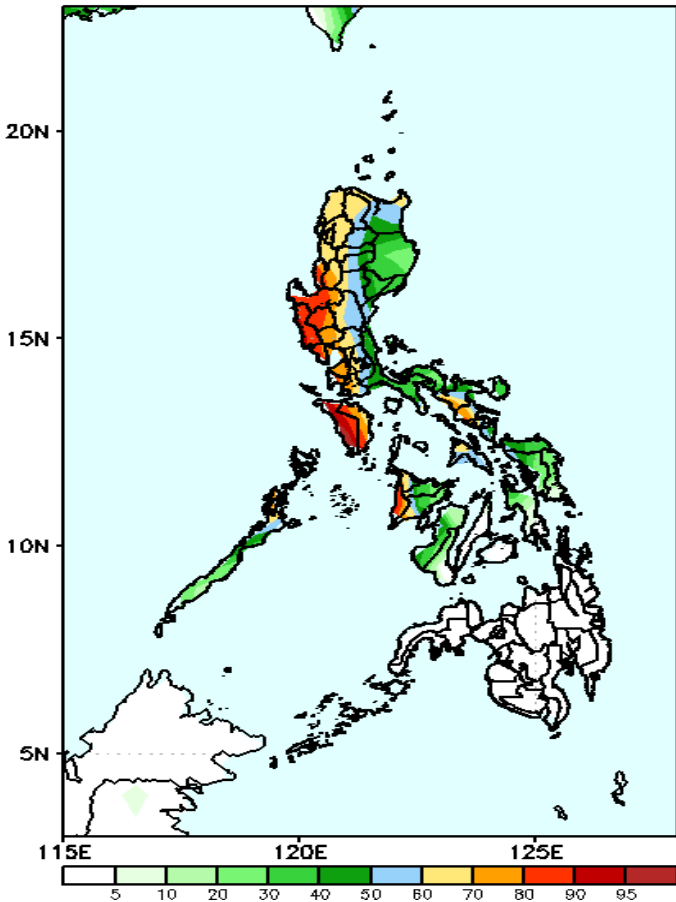


High probability of rainfall to exceed 50mm in most parts of Luzon and Western and Eastern Visayas while less likely for the rest of the country during the forecast period.

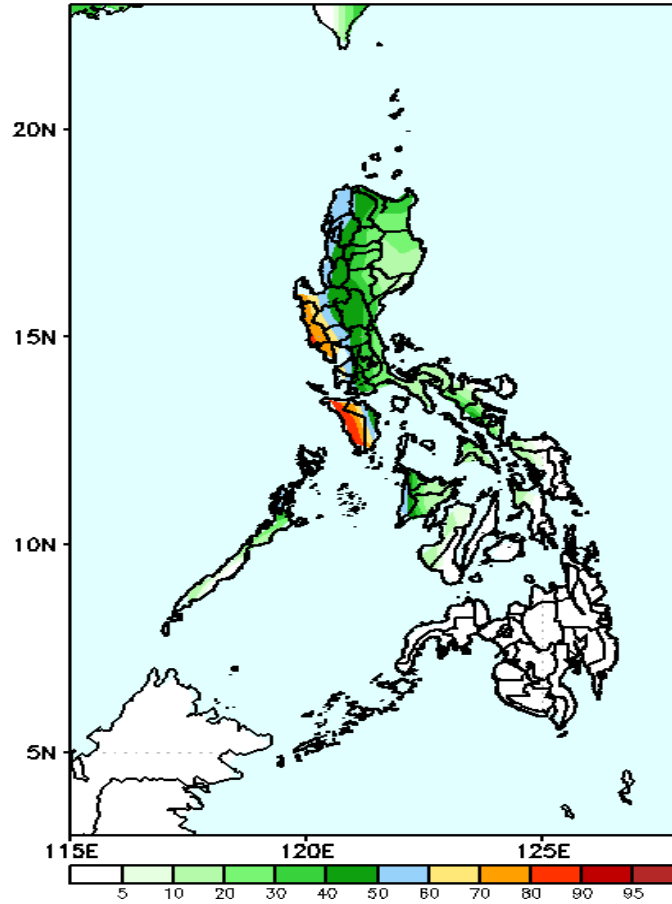
Exceedance Probability > 100/150/200 mm

Week 1: Oct 07-13, 2021

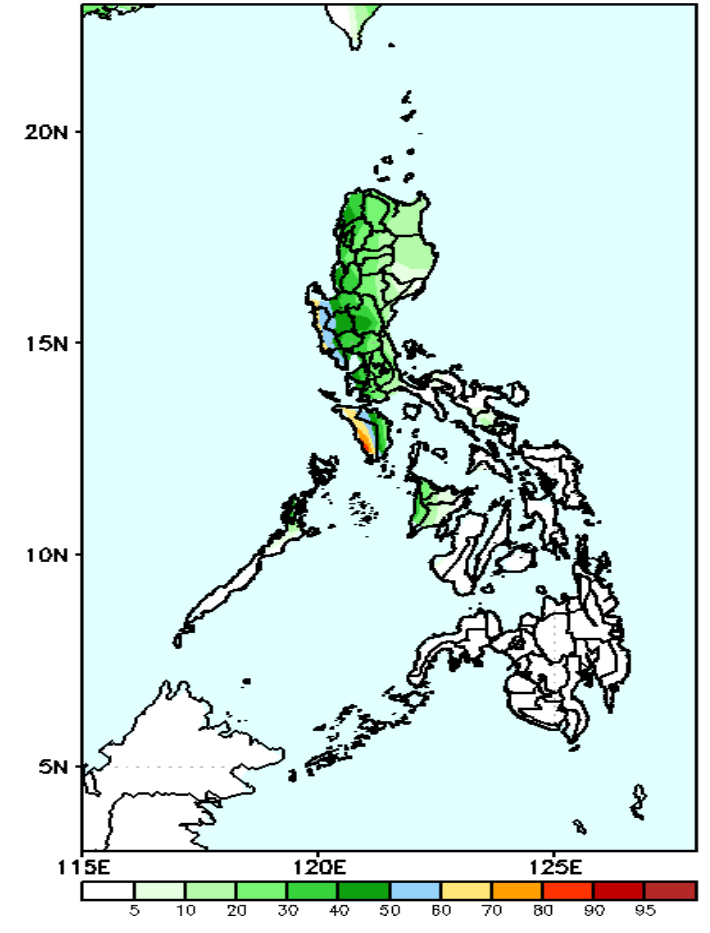
GEFS Week-1 Exceedance Prob. > 100mm
Valid: 20211007 - 20211013



GEFS Week-1 Exceedance Prob. > 150mm
Valid: 20211007 - 20211013



GEFS Week-1 Exceedance Prob. > 200mm
Valid: 20211007 - 20211013



High probability of rainfall to exceed 100mm in some parts of Western Luzon and Antique while less likely for the rest of the country during the forecast period.

Less probability of rainfall to exceed 150mm in most parts of the country is expected except in Occ. Mindoro & western parts of Central Luzon during the forecast period.

Less probability of rainfall to exceed 200mm in most parts of the during the forecast period.



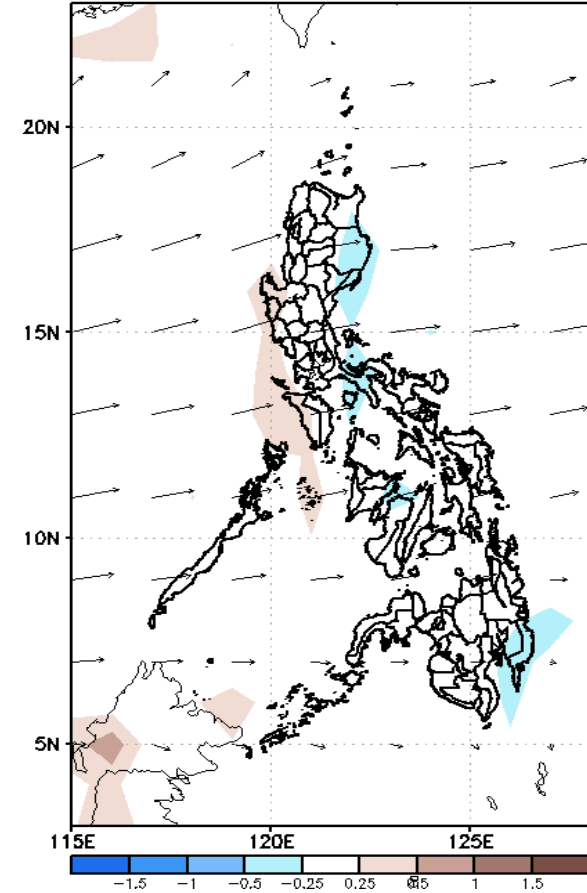
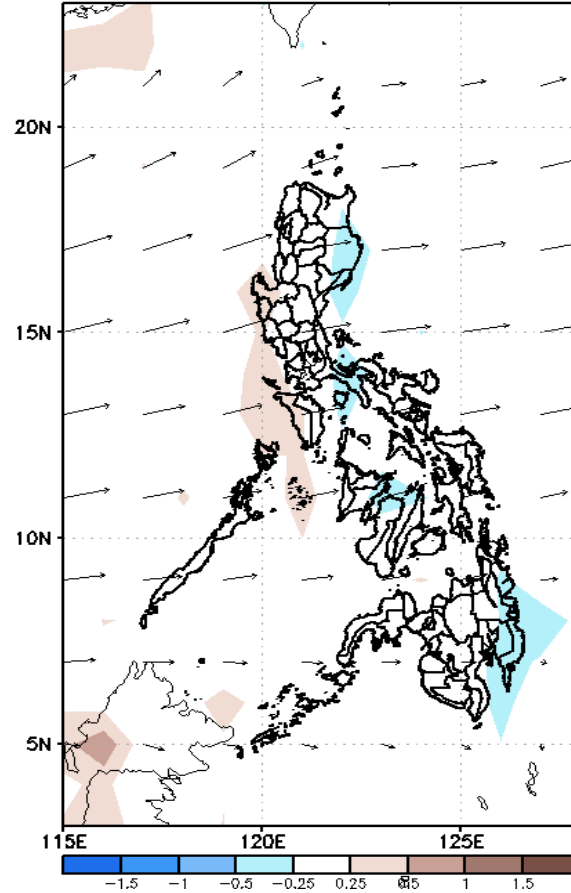
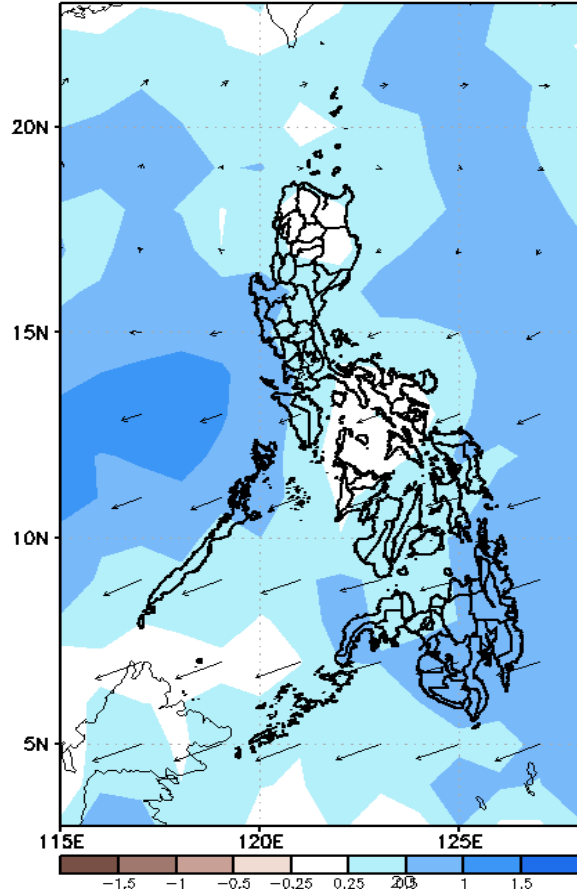
GEFS Week-2 Forecasts: Divergence & Wind Anomaly

Week 2: Oct 14-20, 2021

GEFS week-2 200-hPa Divergence and Wind Anomaly
Valid: 20211014 - 20211020

GEFS Week-2 700-hPa Divergence and Wind Anom
Valid: 20211014 - 20211020

GEFS Week-2 850-hPa Divergence and Wind Anomaly
Valid: 20211014 - 20211020

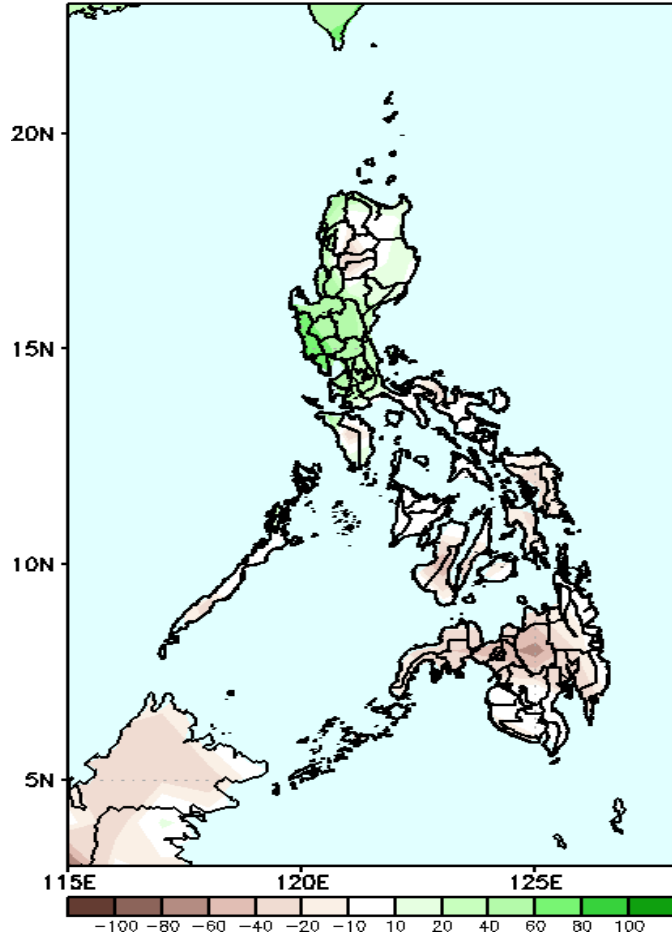


Upper and low level Divergence suggest less likelihood of heavy precipitation in most parts of the country. Easterlies affecting most parts of the country attributing to light to moderate rains due to thunderstorms during the forecast period.

Precipitation Anomaly and Exceedance Probability > 25/50 mm

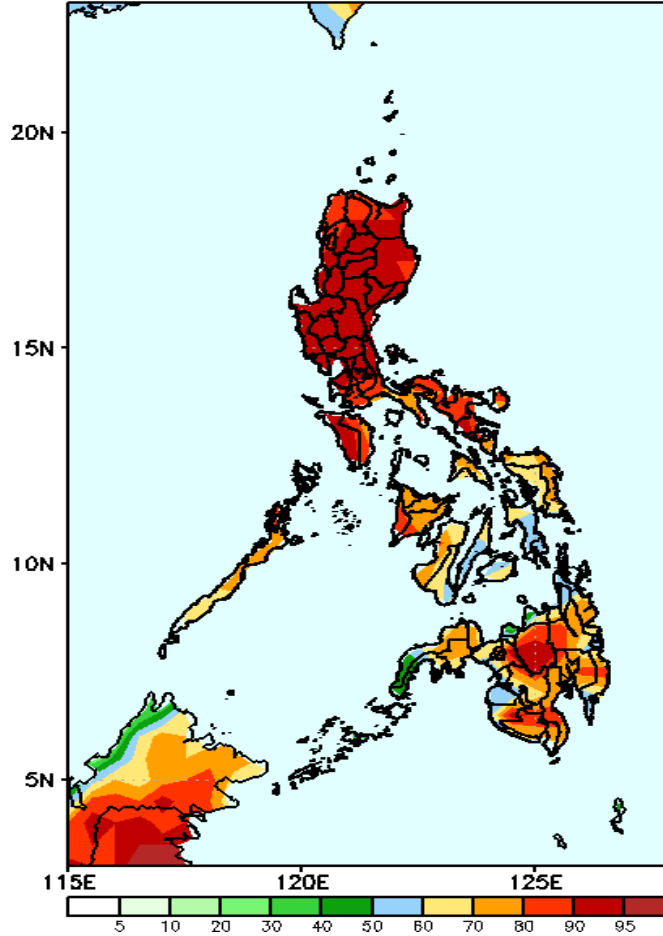
Week 2: Oct 14-20, 2021

GEFS Week-2 Precip Anomaly
Valid: 20211014 - 20211020



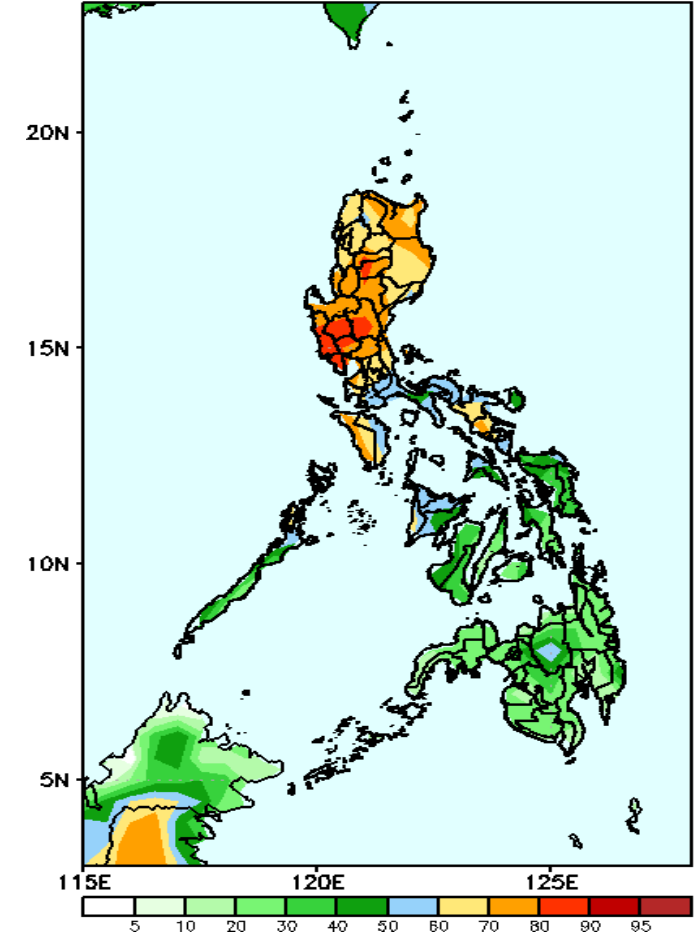
Increase of rainfall 40-90mm is expected in most parts Luzon while rainfall deficit of 40-80mm in Visayas and Mindanao during the forecast period.

GEFS Week-2 Exceedance Prob. > 25mm
Valid: 20211014 - 20211020



High probability of rainfall to exceed 25mm in most parts of the country during the forecast period.

GEFS Week-2 Exceedance Prob. > 50mm
Valid: 20211014 - 20211020

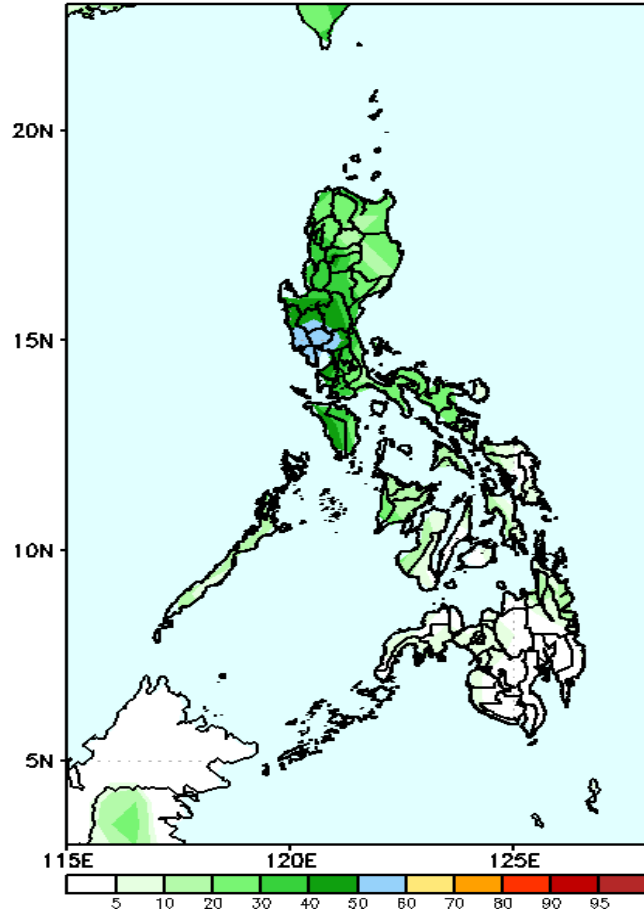


High probability of rainfall to exceed 50mm in most parts of Luzon while less likely for rest of the country during the forecast period.

Exceedance Probability > 100/150/200 mm

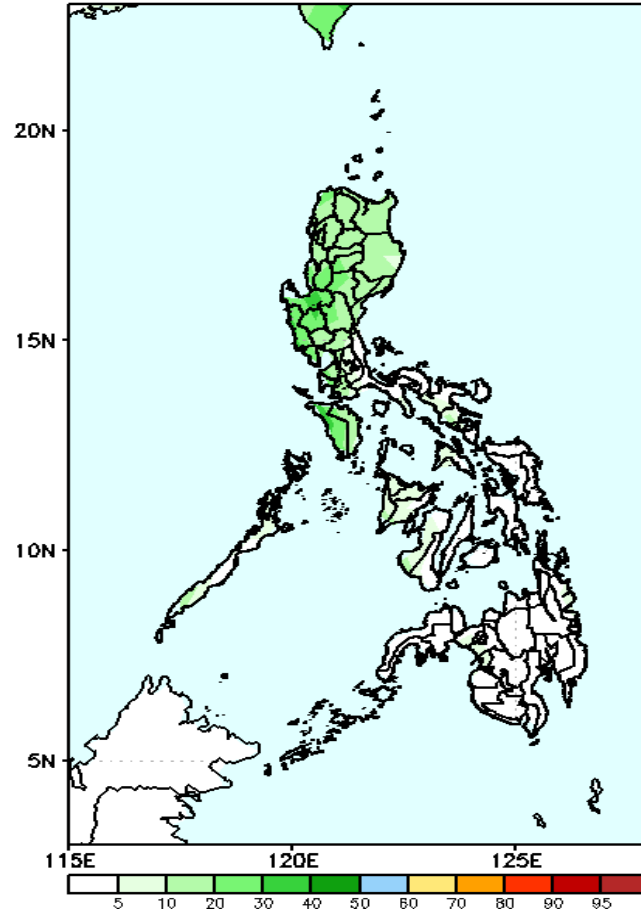
Week 2: Oct 14-20, 2021

GEFS Week-2 Exceedance Prob. > 100mm
Valid: 20211014 - 20211020



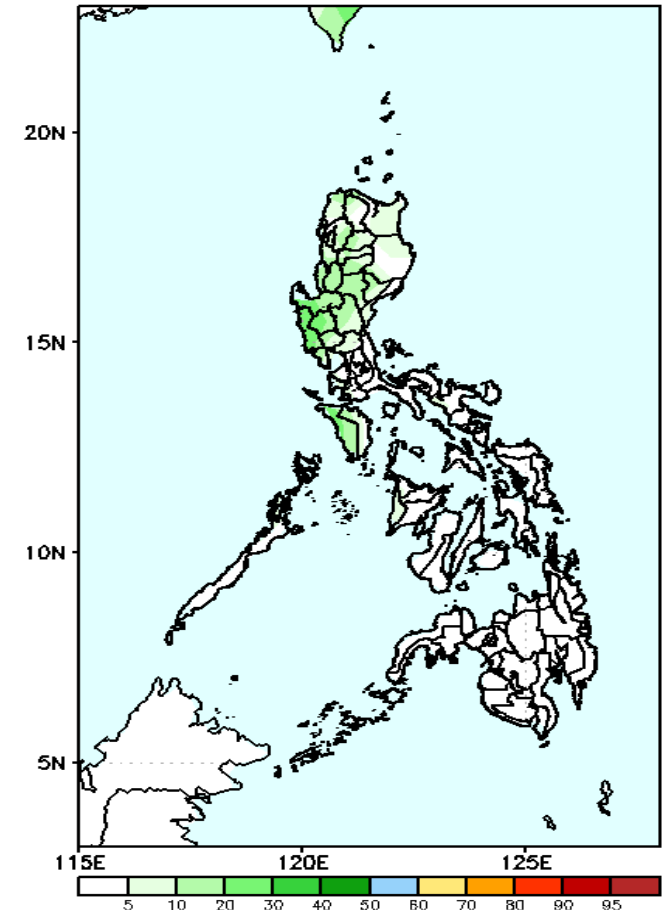
Less probability of rainfall to exceed 100mm in most parts of the country is expected during the forecast period.

GEFS Week-2 Exceedance Prob. > 150mm
Valid: 20211014 - 20211020



Less probability of rainfall to exceed 150mm in most parts of the country is expected during the forecast period.

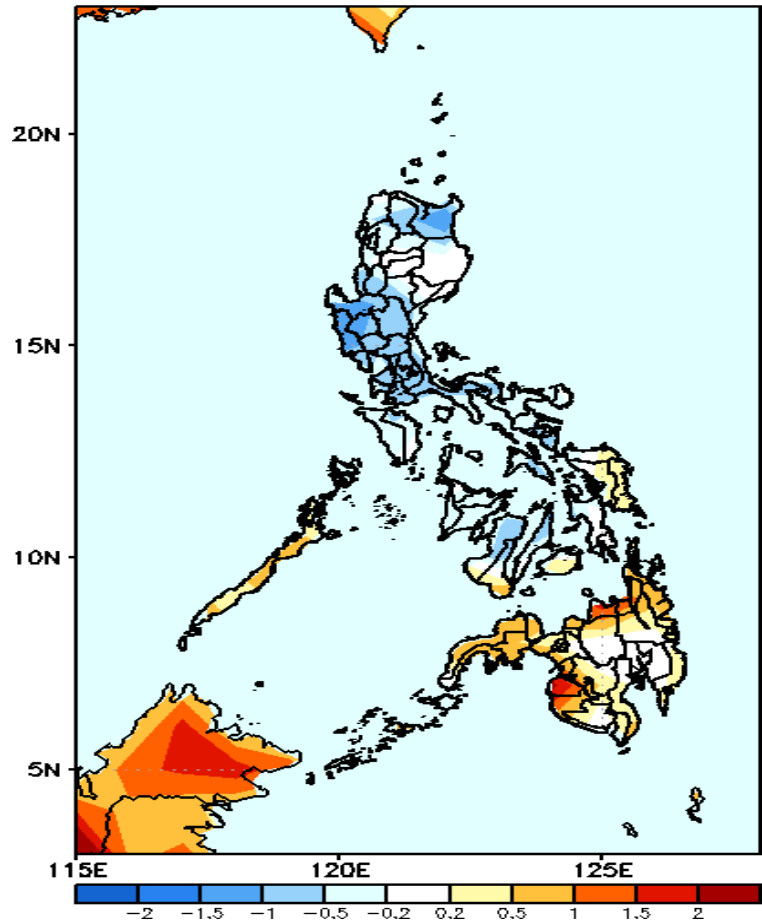
GEFS Week-2 Exceedance Prob. > 200mm
Valid: 20211014 - 20211020



Less probability of rainfall to exceed 200mm in most parts of the country is expected during the forecast period.

GEFS Week-1 & 2 Forecasts: T2m Anomaly

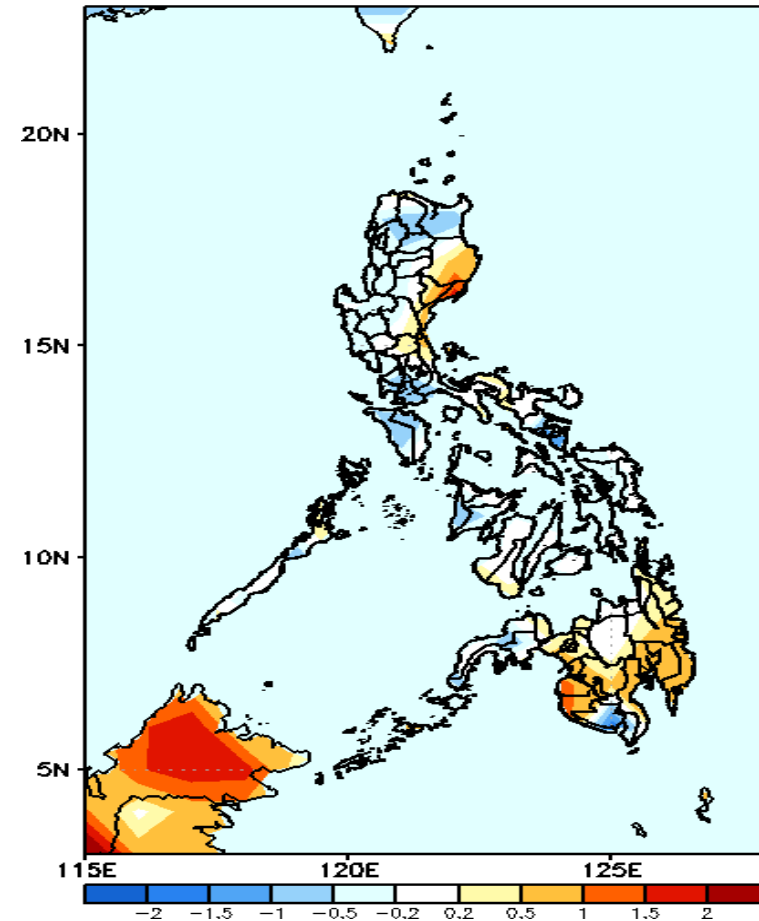
GEFS Week-1 T2m Anomaly
Valid: 20211007 - 20211013



2m Temperature Week 1: Oct 07-13, 2021

Slightly cooler to cooler than average surface air temperature will likely experience in most parts of Luzon (except Isabela) and Central Visayas while slightly warmer to warmer than average temperature in most parts of Mindanao during the forecast period..

GEFS Week-2 T2m Anomaly
Valid: 20211014 - 20211020



2m Temperature Week 2: Oct 14-20, 2021

Average to slightly cooler than average surface air temperature will likely experience in most parts Luzon and Visayas while slightly warmer to warmer than average temperature is expected in eastern Luzon and most parts of Mindanao.

